



Faculty of Dentistry
Universitas Hang Tuah



BOOK
PROGRAMME

5th DENTISPHERE

INTERNATIONAL SCIENTIFIC MEETING

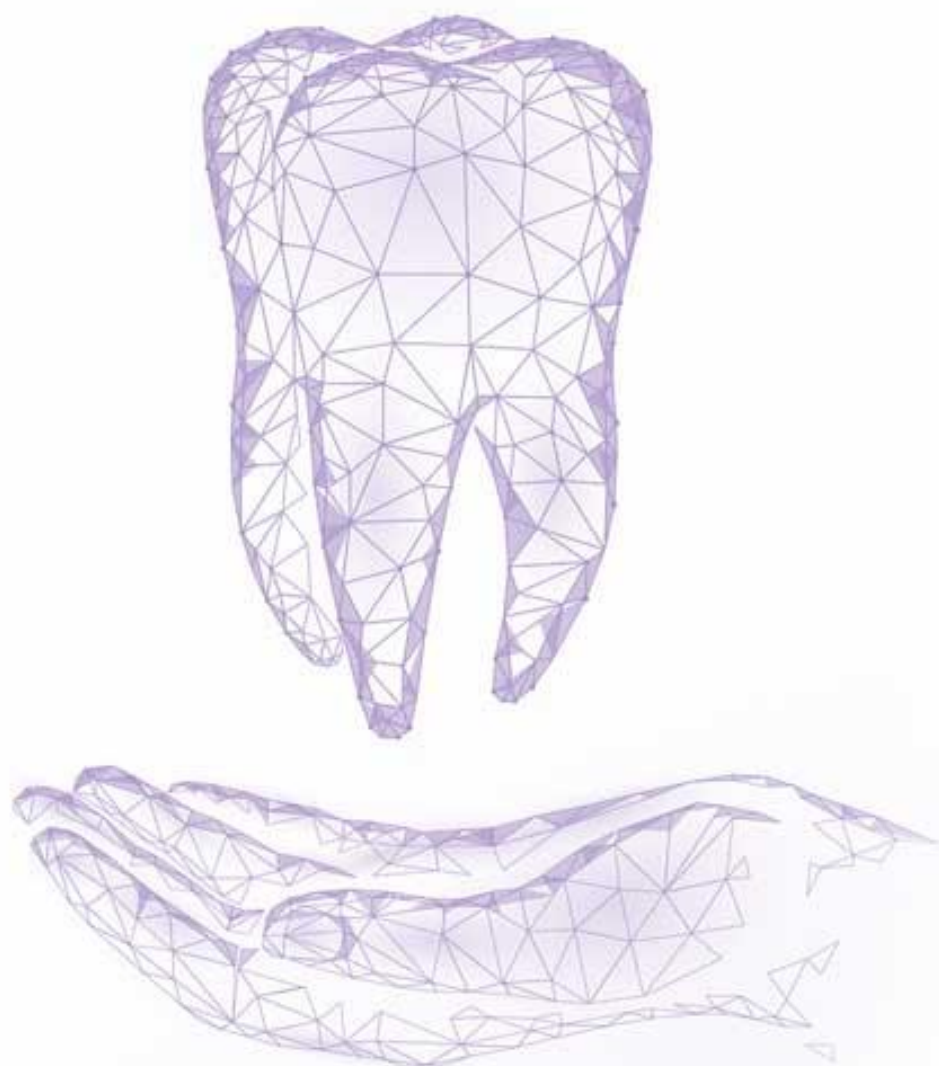
BREAK THE LIMIT – BEYOND DENTMAGINATION

3 - 4 SEPTEMBER 2022

Shangri-La, Surabaya

dentisphere.fkg.hangtuah.ac.id

WELCOME TO 5TH DENTISPHERE



WELCOME NOTES

DEAN

FACULTY OF DENTISTRY
UNIVERSITAS HANG TUAH
SURABAYA



GREETINGS FROM THE DEAN

Welcome to Surabaya, Indonesia!

It is a great honour for us to welcome you all at the International Seminar 5th Dentisphere. This Seminar which held on 3-4th September 2022 at Shangri-La Hotel Surabaya is one of my prides as the Dean of Dentistry Faculty of Hang Tuah University. This is also proofing one of Hang Tuah University's contribution both nationally and internationally in the field of dentistry.

The theme of this year's seminar is Break the Limit-Beyond Dentmagination which aim is to provide a forum for exchanging the latest information in the field of dentistry. In these recent years our activities have been limited by the Covid 19 Pandemic. The holding of this International Seminar indicates that we are able to adapt to the new circumstances. There is no limit that holds us back as long as we push our creativity in this adaptation beyond your imagination. We hope that through this event we can raise the professionalism in the field of dentistry for all participants.

I would like give huge appreciation to our speakers from home and abroad: Japan, Malaysia and Taiwan. Thanks for all contributions and participation and your willingness to come and share your knowledge and experience in dentistry. Also, for all the participants, thank you very much for joining the International Seminar 5th Dentisphere, I hope you can all enjoy the entire summary of the seminar

Sincerely,
Dr. Nora Lelyana, drg., MHKes
Dean Faculty of Dentistry Universitas Hang Tuah

WELCOME NOTES



CHAIRPERSON

5th DENTISPHERE
UNIVERSITAS HANG TUAH
SURABAYA

Dear Colleagues,

It is a great pleasure for us to be the organizer of the DENTISPHERE 5th International Scientific Meeting by the Faculty of Dentistry, Universitas Hang Tuah Surabaya, Indonesia. We extend our warmest welcome to all Participants, Speakers, and Sponsors that make this DENTISPHERE 5th a successful conference.

This scientific meeting will offer a platform to learn and exchange ideas with a host of international and national speakers, with the theme “BREAK THE LIMIT – BEYOND DENTMAGINATION.” DENTISPHERE 5th will provide participants unique opportunities to develop their professional knowledge and skills and network with other audiences. We hope this seminar will allow all participants to capitalize on enough expertise and experience to keep in touch with issues worldwide in dental health. I also encourage you to take advantage of the presence of dental companies to keep up to date with evolving technologies of equipment and the latest dental materials.

I wish to thank all Participants, Honored Speakers, Sponsors, and all who contribute to the success of the DENTISPHERE 5th in Surabaya. I hope you not only have an event for developing our professionalism but also could enjoy a lovely stay and have a memorable excursion on Surabaya. Thank you for your kind attention, have a nice day, and enjoy your discussion.

Sincerely,
Ghita Hadi Hollanda, drg., M.Kes
Chairperson of DENTISPHERE 5th

**OUR
ORGANIZING
COMMITTEE**



ORGANIZING COMMITTEE

Protector

Rector Universitas Hang Tuah Surabaya
Prof. Dr. Ir. Supartono, M.M., CIQar
Prof. Dr. Dian Mulawarmanti, drg., M.S., PBO
Dr. Drs. Ir. Siswo Hadi Sumantri, S.T., M.MT., M.Tr.Opsla., CIQnR., CIQaR., IPU

Person in Charge

Dean of Faculty of Dentistry
Universitas Hang Tuah Surabaya
Dr. Nora Lelyana, drg., M.H.Kes, FICD
Dr. Kristanti Parisihni., drg., M.Kes
Dr. Syamsulina Revianti, drg., M.Kes, PBO
Dr. Arya Brahmanta, drg., Sp.Ort

Chairman

Ghita Hadi Hollanda, drg., M.Kes

Vice Chairman

Chaterina Diyah Nanik K, drg., Sp.Pros

Secretary I

Kharinna Widowati, drg., M.Kes

Secretary II

Fitria Rahmitasari, drg., M.Kes

Treasurer 1

Aulia Dwi Maharani, drg., M.Kes

Treasurer 2

Evi Lailatul Munawaro, S.Pd

Scientific Division

Head of Scientific Division
Dr. Rima Parwati Sari, drg., M.Kes., PBO

Scientific Division (Publication)
Widyasri Prananingrum, drg., M.Kes., Ph.D
Onge Victoria, drg., Sp.Perio
Bunga Fauzia, drg.

Scientific Division (Competition)
Dr. Noengki Prameswari, drg., M.Kes

Scientific Division (Poster)
Agni Febrina Putri, drg., M.Kes

Scientific Division (Table Clinic)
Twi Agnita Cevanti, drg., Sp.KG
Yoifah Rizka, drg., Sp.Perio

Scientific Division (Short Lecture)
Dr. Sularsih, drg., M.Kes
Dr. Sarianoferni, drg., M.Kes

Stage Event and Opening Ceremony Division

Sinta Puspita, drg., Sp.KG
Ayulistya Paramita, drg., Sp.KGA
Meralda Rossy, drg., Sp.Ort
Restika A.P., drg., M.Kes
Faizah Hanum, drg., Sp.Ort

Finance and Exhibition Division

Vivin Ariestania, drg., Sp.Pros
Aprilia, drg., Sp.KG
Yongki Hadinata, drg., Sp.KG
Diana Soesilo, drg., Sp.KG

Registration Division

Eriza Juniar, drg., Sp.KGA
Nur Tsurraya, drg., Sp.PM
Icha Artyas Annariswati, drg., M.Si
Shintya Rizki Ayu Aghita, drg., M.Si.

Publication and Documentation Division

Charissa Roderica, drg., M.M.
Rizko Wira Artha Megantara, drg., Sp.Pros
Dimas Iman, drg., Sp.Ort
Fitri Puji Rahayu, S.Ak

IT and Multimedia Division

M. Basroni Rizal, drg., M.Kes
Hansen K., drg., Sp.Perio
Tandy Izzud, drg., M.M.
Cakrawartya Ramadhi, drg.

Equipment Division

Fani Pangabdian, drg., Sp.KG
Novendy Y., drg., Sp.Perio
Mardiyanto Rizki, drg., M.Kes
Ivan Tantra, drg., M.KedKlin., Sp.BM

Consumption Division

Yulie Emilda A., drg., Sp.KGA
Dr. Linda Rochyani, drg., Sp.KG
Annisa Listya P., drg., Sp.KGA

Accommodation and LO Division

Dianty Saptaswari, drg., Sp.Perio
Ari Rosita Irmawati, drg., Sp.KGA
Yufita Fitriani, drg., Sp.KGA

International Affair

Meinar Nur Ashrin, drg., PhD
Dwi Andriani, drg., M.Kes

Alumni Division

Dina Irsyandhi Ali, drg
Amelia Elizabeth Pranoto, drg., Sp.BM

AFDOKGI Division

Dr. Widyastuti, drg., Sp.Perio

GENERAL INFORMATION

VENUE

Shangri-La Hotel Surabaya

REGISTRATION

Registration desk will be open during 3-4th September 2022 at the Pre-Function Lobby, Ballroom A, B, C, Ground Floor – Shangri-La Hotel at the following times:

- Saturday, 3rd September 2022 07.30 – 17.00
- Sunday, 4th September 2022 07.30 – 17.00

NAMA BADGE

Participants, speakers, accompanying persons and exhibitors are kindly requested to wear their badges during all congress activities for security purposes. Name badge will be given in the registration desk during the re-registration. Meal coupons will be included behind the name badge.

CONFERENCE KIT

The conference kit can be obtained once at the registrations desk during the re-registration by showing the official confirmation slips.

CERTIFICATE OF ATTENDANCE

An official certificate of attendance will be distributed at the registration desk starting on Sunday, 4th September 2022 at 15.00.

OPENING CEREMONY

- Day / Date : Saturday, 3rd September 2022
- Time : 10.30 – 11.30
- Venue : Ballroom A & B

CLOSING CEREMONY

- Day / Date : Sunday, 4th September 2022
- Time : 16.30 – end
- Venue : Ballroom A

ORAL PRESENTATION & FILE SUBMISSION

To avoid any inconveniences, all speakers are asked to submit their presentation files to the Registration Table (Lobby Ballroom A & B) at least 4 hours before their session to check the system and to save the final version of their presentation files.

POSTER PRESENTATION

All poster will be displayed in the Pre-Function area Nirwana Room 1 and Pelangi Room 1-3

CREDIT POINT (SKP)

No: SKP-I/196/PB PDGI/VIII/2022

Seminar Participant Day 1	: 4.5 SKP
Seminar Participant Day 2	: 4.5 SKP
Table Clinic Participant	: 6 SKP
Speaker	: 4 SKP
Table Clinic Lecturer	: 4 SKP
Short Lecture Adjudicator	: 5 SKP
Moderator	: 3 SKP
Committee	: 3 SKP

CONFERENCE & ORGANIZING COMMITTEE SECRETARIAT

During the Congress : Registration Table at the Lobby, Shangri-La Hotel, Surabaya, Indonesia

After the Congress : Faculty of Dentistry, Universitas Hang Tuah Surabaya, Indonesia
Jl. Arif Rahman Hakim no. 150, Surabaya 60111
(+62)31 5912191

OUR
INVITED
SPEAKERS



OUR SPEAKERS

1	Usman Sumantri, drg., MS.c	Indonesia
2	Prof. Ping-Yen Liu, M.S., Ph.D., FECS, FACC	Taiwan
3	Prof. Miho Terunuma, D.D.S., Ph.D	Japan
4	Prof. Takeyasu Maeda, D.D.S., Ph.D	Japan
5	Prof. Tomonori Iwasaki	Japan
6	Associate Prof. Dr. Zaihan Arifin	Malaysia
7	Prof. Sung-Hoon Lim, D.D.S.	Korea
8	Dr. Eha Renwi, drg., Sp.RKG(K)	Indonesia
9	Marino Sutedjo, drg., Sp.KG	Indonesia
10	Dr. Endah A.T. Wulandari, drg., Sp.PM(K)	Indonesia
11	John L. Gunawan, drg., Sp.Perio	Indonesia
12	Onny Eryanto, drg.	Indonesia
13	Roberto Simanjuntak, drg., M.S., Sp.BM(K)	Indonesia
14	Vivin Ariestania, drg., Sp.Pros	Indonesia
15	Prof. Dr. Ida Bagus Narmada, drg., Sp.Ort(K)	Indonesia
16	Anna Muryani, drg., Sp.KG(K-E)	Indonesia
17	Aulia Yudha, drg., Sp.Perio	Indonesia
18	Stephanie Adellia, drg., M.M., Sp.Ort	Indonesia
19	Marik Guizot, drg., Sp.BM	Indonesia
20	Dr. Sindy Cornelia Nelwan, drg, Sp.KGA, K-KKA	Indonesia
21	Ferdinand Hadinata, drg., Sp.Perio	Indonesia
22	Prof. Dr. Dian Mulawarmanti, drg., M.S., PBO	Indonesia
23	Dhanni Gustiana, drg., Sp.BM	Indonesia
24	Dennis, drg., MDSc., Sp.KG(K-E)	Indonesia
25	Alvin Tjiptarahardja, drg., Sp.Pros	Indonesia
26	Dr. Taufan Bramantoro, drg., M.Kes	Indonesia
27	Aprilia, drg., Sp.KG	Indonesia
28	Karlina Samadi, drg., M.S., Sp.KG(K-E)	Indonesia
29	Widaningsih, drg., Sp.Pros	Indonesia
30	Dr. Arya Brahmana, drg., Sp.Ort	Indonesia
31	Chaterina Diyah N., drg., Sp.Pros	Indonesia
32	Meinar Nur Ashrin, drg., Ph.D	Indonesia
33	Meralda Rossy, drg., Sp.Ort	Indonesia
34	Faizah Hanum, drg., Sp.Ort	Indonesia
35	Ghita Hadi Hollanda, drg., M.Kes	Indonesia
36	Aulia Dwi Maharani, drg., M.Kes	Indonesia
37	Restika A.P., drg., M.Kes	Indonesia



Prof. Ping-Yen Liu, M.D., Ph.D., FESC, FACC
Taiwan

Sunday, 4th September 2022, Ballroom A, 08.25 – 08.50

**“Application of precision medicine in cardiovascular system:
Genetic risk scores for coronary instent restenosis in Taiwan”**

Abstract

Rationale: How to identify high-risk population for next-generation drug-eluting stent (DES) with instent restenosis (ISR) by genetic studies has not been investigated.

Objective: To study the power of genetic risk score to identify high-risk population for next-generation DES with ISR.

Methods and Results: We conduct a single-center cohort study with median follow-up of 2.8 years (interquartile range, 1.4–4.7) and enrolled coronary artery disease patients receiving next-generation DESs from January 2010 to December 2019. The participants were classified into the derivation cohort and validation cohort to determine genetic risk score of next-generation DES with ISR. The genetic risk score was defined as the sum of the number of selected exonic single nucleotide polymorphisms (SNPs) for the risk allele. There were 2,749 patients receiving next-generation DESs and 205 patients having DES with ISR confirmed by coronary angiography. Six hundred thirty patients (age: 64.4 ± 10.1 years, male: 80%) were included for genotyping analysis: 72 patients had DES with ISR. After propensity score matching, there were 343 patients and 153 patients in the derivation and validation cohorts, respectively. Five selected SNPs, i.e., SNPs in CAMLG, GALNT2, C11orf84, THOC5, and SAMD11, were included to calculate the genetic risk score for next-generation DES with ISR. In the derivation cohort, patients with a score ≥ 3 had significantly higher DES with ISR rates (hazard ratio [HR]: 5.17, 95% confidence interval [CI]: 2.57–10.38, $p < 0.001$). In the validation cohort, the prevalence of DES with ISR in patients with a score ≥ 3 was also significantly higher than that in patients with a score < 3 (HR: 3.68, 95% CI: 1.37–9.86, $p < 0.001$).

Conclusion: We demonstrated the significant association between the five SNPs-derived genetic risk score and DES with ISR. This model could provide incremental biological information for interventional cardiologists prior to percutaneous coronary intervention.



Prof. Miho Terunuma, D.D.S., Ph.D

Japan

Saturday, 3rd September 2022, Ballroom A, 13.00 – 13.30

**New era of basic science in Dentistry
~ Importance of nutrition research~**

Abstract

Nutrition and diets have been shown to affect oral health. Minerals are important to build bones and teeth, and vitamins are necessary for keeping healthy gums. Moreover, the consumption of sugars has been associated with an increased risk of developing dental caries, and high-sugar/high-fat diets has been associated with an increased risk of periodontal diseases.

Interestingly, high protein diets have become popular worldwide for the maintenance of muscle to stay health. Indeed, the protein boom has come to Japan, and currently the market is growing. However, protein intake may result in increased ammonia production, which is a potent neurotoxin that causes severe damage to the central nervous system. In this lecture, I would like to discuss about the mechanism of protein metabolisms in our body and how altered metabolism affects our health. I would also like to introduce the link between microbiome and mental health through amino acids.



Prof. Takeyasu Maeda, D.D.S., Ph.D

Japan

Saturday, 3rd September 2022, Ballroom B, 13.00 – 13.30

“Bone Quality in Implantation”

Abstract

Osseointegration has been regarded as the most appropriate bone-implant interface. Thus, numerous morphological studies have shown the tissue response to implantation, in particular establishment process of osseointegration between the bone and implant. This lecture will provide the morphological findings on property and fate of newly-formed bone in dental implant in an experimental model. Implant cavity preparation caused the occurrence of the injured bone characteristic of empty osteocytic lacunae or piknosis between the newly-formed bone and the pre-existing bone. Such a damaged bone remained after achievement of osseointegration. In addition, histological examination showed that the newly-formed bone around the implant was categorized in woven bone which is easily formed but resorbed. It gradually decreased to disappear completely by very slowly bone remodeling with a synchronized coordination of osteoblasts and osteoclasts after establishment of osseointegration, thickening to be replaced by compact bone, resulting in replace by compact bone. Electron Probe MicroAnalysis (EMPA) for an examination of bone quality demonstrated chronologically increased levels of Ca and P in the newly-formed bone identical to those in the surrounding bone, meaning the maturation of newly-formed bone around the implant. These findings by our experiments indicate that we have to pay special attention to bone quality of the newly-formed bone rather than bone formation process.



Prof. Tomonori Iwasaki

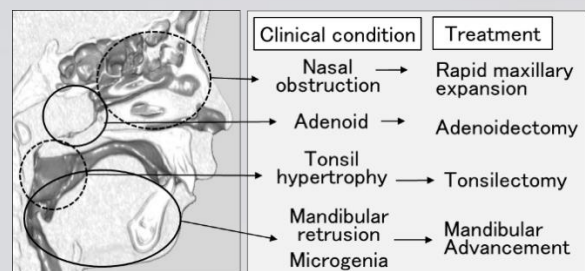
Japan

Sunday, 4th September 2022, Ballroom A, 08.50 – 09.15

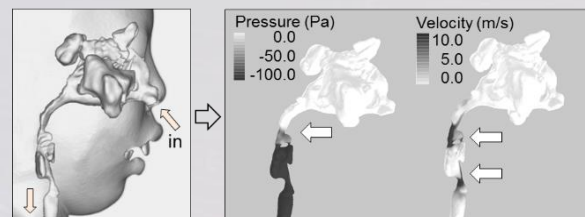
“Indication of The Dental Treatment for Pediatric OSA using Computer Fluid Dynamics”

Abstract

Pediatric obstructive sleep apnea syndrome (OSA) is caused by adenoidal and palatine tonsillar hypertrophy, nasal disease, and with respect to dental conditions, constricted maxilla and mandibular retrusion. The syndrome involves airway obstruction during sleep, which leads to repetitive apnea and hypopnea, thus causing hypoxemia and sleep disorder with various associated complications. Its prevalence is approximately 2%. Adenoidectomy and/or palatine tonsillectomy is the first-line treatment for patients with pediatric OSAS. However, recent reports have suggested good efficacy of dental treatments such as rapid maxillary expansion (Pirelli et al., Prog. Orthod., 2005), and myofunctional therapy (Guilleminault et al., Sleep Med., 2013) in patients with pediatric OSAS. We have



Cause site and treatment of pediatric OSA



Upper-airway flow simulation

previously shown that rapid maxillary expansion improved the nasal ventilation (AJODO 2012), alleviated the low tongue position and caused expansion of the pharyngeal airway (AJODO 2013), and reduced excessive negative pressure that causes pharyngeal airway contraction during inhalation (IJPOTO 2014), and the use of the Herbst appliance effectively expanded the pharyngeal airway (AJODO 2014) and improved the nasal ventilation (Angle Orthod., 2017). These findings suggest that dental treatment is effective for pediatric OSAS. However, although it is essential to choose a treatment method that targets the causative site of pediatric OSAS, which has potentially different loci in the upper airway, there is no established method to identify the site; therefore, using dental treatment in patients with OSAS is considered premature.

We have developed the upper-airway flow simulation, which is the intellectual property of Kagoshima University (AJODO 2011). It involves constructing a three-dimensional model of the upper airway on the basis of computed tomography data, reproducing respiratory movements similar to those with inhalation and exhalation in the actual human body, and functional evaluation under upper-airway ventilation condition; therefore, it has the potential for use as an effective method to define the site and severity of the upper-airway ventilation disorder. Moreover, effective use of the upper-airway flow simulation will enable identification of patients with indication for adenoidectomy and/or palatine tonsillectomy, maxillary expansion, or both treatments and thereby facilitate the application of dental treatment to patients with pediatric OSAS through a collaborative treatment approach involving teams from both the medical and dental department.



Associate Prof. Dr. Zaihan Arifin

Malaysia

Sunday, 4th September 2022, Ballroom A, 09.15 – 09.45

“Management for compromised canal space with dental post: past, present, and future.”

Abstract

The longevity of endodontically treated teeth has been greatly enhanced by continuing developments made in endodontic therapy and restorative techniques. It has been reported that many endodontically treated teeth require dental post to retain the future crown. There are many commercially available prefabricated post systems and casting techniques can be made. However, some cases like retreatment dental post core, large canal space and flare canal can be difficult to deal with. The final clinical decision when restoring the compromised canal should be considered with broader perceptive and variables for more predictable outcome.



Prof. Sung-Hoon Lim, D.D.S.

Korea

Sunday, 4th September 2022, Ballroom A, 08.00 – 08.25

“Improving the success rate and utility of the orthodontic mini-implants”

Abstract

The success rate of the orthodontic mini-implant on the alveolar bone was reported as 70 to 95%. However, the success rate can be improved greatly by inserting the mini-implant vertically, parallel to the tooth's long axis and buccal cortical bone. To place the mini-implant vertically, changing the insertion angle is needed after the purchase of the cortical bone by the screw tip. Predrilling also can be helpful to avoid slippage during insertion. Also, the precise analysis of the anatomy of the adjacent root curvatures and bone volume is crucial. Another way of improving the success rate of mini-implant is positioning the mini-implant on the thick and dense bone. Thick and dense bone can be found on the midpalatal area and distobuccal side of the mandibular second molar, which is medial to the external oblique ridge. Mini-implants placed in these areas show a nearly 99% success rate and can resist greater force. Mini-implants placed at the distobuccal side of the mandibular second molar can be used for distalization of the total mandibular arch, and uprighting of impacted or mesially-tipped mandibular 2nd molar. To improve the utility of the orthodontic mini-implant, the use of a mini-implant with a bracket head or hole is recommended. Overlay archwires or cantilever springs can be placed in this bracket head or hole. In this presentation, anatomical and biomechanical considerations in placing and using orthodontic mini-implants will be discussed with clinical cases.



Dr. Eha Renwi, drg., Sp.RKG (K)

Indonesia

Saturday, 3rd September 2022, Ballroom B, 13.30 – 14.10

“What we need to know in CBCT-D for daily dental practice?”

Abstract

CBCT (*Cone Beam Computed Tomography*) merupakan teknologi pencitraan ekstraoral yang dapat memberikan gambaran tiga dimensi, yang saat ini menjadi salah satu modalitas pencitraan pilihan sebagai solusi dan jawaban dari berbagai keterbatasan radiografi dua dimensi. Ketersediaan pesawat CBCT di Indonesia masih terbatas karena harganya yang cukup mahal, dan masih banyak dokter gigi di Indonesia yang belum mengenal modalitas ini. Hal ini disebabkan karena materi tentang pemeriksaan radiografi CBCT tidak ada dalam Standar Kompetensi Dokter Gigi Indonesia (SKDGI), sehingga tidak tertuang dalam kurikulum di Program Pendidikan Dokter Gigi di Indonesia. Pemeriksaan ini banyak dipilih praktisi di berbagai bidang Spesialistik Kedokteran Gigi karena dapat memberikan informasi yang lebih akurat dan detail mengenai manifestasi rongga mulut dengan pencitraan 3 dimensi. Seminar ini bertujuan untuk menambah pengetahuan peserta seminar tentang modalitas CBCT-3D antara lain pengertian, cara kerja alat, indikasi, kelebihan dan kekurangan serta aplikasinya di bidang kedokteran gigi; sehingga dapat memaksimalkan pemanfaatan radiografi CBCT untuk praktik sehari-hari.



Marino Sutedjo, drg., Sp.KG

Indonesia

Saturday, 3rd September 2022, Ballroom A, 14.10 – 14.50

“From Macro to Micro in Endodontic Workflows”

Abstract

Endodontic is the branch of dentistry concerned with the morphology, physiology and pathology of the human dental pulp and periradicular tissues. And endodontic is the only branch in dentistry in which operator can't see clearly the operating field. This will be a challenge for us since we have to create a predictable outcome in unpredictable condition. And unfortunately in our daily practice, we often have to deal with endodontic treatment almost everyday.

Therefore, we need to have a good procedure to be able to create a predictable outcome. This procedure start from the macro workflows which is Diagnosis, Access, Shaping and cleaning, Obturation and Restoration. But, this macro workflows is not enough. In each of this macro workflows, there are micro workflows that also need to be learn.

In this lecture, both Macro and Micro workflows in endodontic treatment will be discuss in order to achieve predictable outcome for our endodontic treatment.



Dr. Endah A.T. Wulandari, drg., Sp.PM (K)
Indonesia

Saturday, 3rd September 2022, Ballroom B, 15.00 – 15.40

“Distinguishing common oral diseases in daily practice”

Abstract

Berbagai lesi jaringan lunak rongga mulut memiliki kemiripan secara klinis dan seringkali menyulitkan bagi para klinisi untuk dapat menegakkan diagnosis. Ketidakmampuan menegakkan diagnosis yang tepat akan berakibat pada tata laksana yang tidak tepat pula. Pada kasus-kasus dimana ada resiko perubahan lesi menjadi sebuah keganasan, tentu kemampuan para klinisi untuk dapat sesegera mungkin mengenali dan mendiagnosis menjadi sangat penting untuk mendapatkan prognosis yang lebih baik. Dalam seminar kali ini, akan dibahas mengenai pengenalan lesi oral pada kandidiasis oral, leukoplakia, oral lichen planus, infeksi virus *Herpes simpleks* dan *Varicella zoster* rekuren, stomatitis aftosa rekuren, ulkus traumatik dan keganasan rongga mulut, bagaimana cara membedakan lesi oral dari berbagai penyakit tersebut dengan lebih mudah, serta bagaimana penanganan awal yang dapat diberikan oleh para sejawat dokter gigi pada penyakit-penyakit tersebut. Diharapkan para sejawat dokter gigi mampu mengenali secara dini berbagai lesi oral tersebut serta tata laksana awal yang harus diberikan para praktek sehari-hari.



John Gunawan L., drg., Sp.Perio

Indonesia

Sunday, 4th September 2022, Ballroom A, 14.10-14.45

“Tooth Sensitivity: Causes and Remedies”

Abstract

Faktor2 yg perlu di ketahui dokter gigi umum maupun spesialis yang menyebabkan gigi sensitif. Seperti akibat penyikatan gigi yang salah, resesi gingiva, grinding, clenching maupun faktor kebiasaan makan yang salah, juga post op perawatan gigi.

Di workshop ini di bahas Tips n Trik pencegahan dan cara perawatan gigi sensitif pada pasien agar tepat sasaran dan sesuai indikasi dan kondisi pasien dengan bahan dan alat dengan teknologi terkini.



Onny Eryanto, drg.

Indonesia

Saturday, 3rd September 2022, Ballroom B, 15.40 – 16.20

“Mimicking Nature by Injectable Bioactive Material”

Abstract

Celah pada gigi depan sering menjadi permasalahan estetika pada pasien. Banyak pilihan perawatan yang dapat digunakan untuk menyelesaikan problem tersebut. Salah satunya adalah dengan restorasi direct composite yang menjadi pilihan utama jika pasien memiliki keterbatasan waktu dibanding jenis perawatan yang lain. Tetapi sering menjadi masalah karena tidak mudah untuk dapat menghasilkan restorasi komposit untuk menutup celah yang tidak terlihat dan rapi sehingga jaringan gusi dapat beradaptasi dengan baik juga terhadap restorasi tersebut. Oleh karena itu pada pembahasan kali ini akan fokus bagaimana menghasilkan restorasi komposit untuk menutup celah dengan baik.



Anna Muryani, drg., Sp.KG (K-E)

Indonesia

Saturday, 3rd September 2022, Ballroom A, 15.40 – 16.20

“Crown or not to Crown Root Canal Treated Teeth”

Abstract

Dental caries is a very common case that happen in the dental problem, mostly the patient didn't realize and come to the dentist only when the cavity is already too deep which consequently results in inflammations & toothache. There are varieties of treatments to choose when handling such cases, but mostly endodontic treatment is a treatment that are very often needed for the patient, and finalized by the restoration of the teeth. In recent dental science, there have been a numerous advancements which may allow dentists to preserve more tooth structure when doing endodontics & restorative treatments. There are many factors to consider when choosing the right restoration in endodontically treated teeth, whether or not to do post core crown, whether to do direct or indirect restoration which always depends on the remaining tooth structure. A very comprehensive knowledge & skills in such treatments is an obligatory for every practicing dentist. A lack of refreshment & updates in the ever developing dental science may lead to difficulties in achieving an efficient and successful treatment. In this seminar, the participant will be given material about “crown or not to crown root canal treated teeth”, starting from case selection and analysis, how to reach minimally invasive endodontic and its implementation in restorative dentistry, how to manage a restorative on an endodontically treated posterior teeth, how to implement the use of flowable composite and bulk-fill composite to assure the complete seal at the base of cavity in endodontically treated teeth. Hopefully, By doing routine updates in dental knowledge, it will indirectly reflect to the ability of the dentist in analyzing patient cases and providing an efficient & successful treatment for the patient.



Aulia Yudha, drg., Sp.Perio

Indonesia

Sunday, 4th September 2022, Ballroom B, 09.10 – 10.00

“Dealing with Difficulties in Splinting, Why Not?”

Abstract

Patients with periodontal disease commonly complaining about tooth mobility. Increased tooth mobility adversely affects function, aesthetics and the patient's comfort, mainly in mastication. These problems are their basically reason looking for dental treatment. The determining factors of tooth mobility are caused by one or the combination of these factors; destruction/decreasing alveolar bone height and widened of periodontal ligament. Periodontal destruction often leads to tooth mobility, secondary to bone loss and severed by the presence of traumatic occlusion

Tooth mobility may be reduced by eliminating the causing factors, the bacteria, antibiotics treatment, surgical treatment, relieving traumatic occlusion, healing and stimulating bone regeneration by grafting or guide tissue regeneration. Splinting acts as the supportive treatment modified with other periodontal treatments. Splinting teeth to each other allows distribution of forces from mobile teeth to their immobile neighbors, thereby gaining support from stronger teeth. Temporary splinting done as initial periodontal treatment before any others surgical treatment, otherwise permanent splinting used as part of restoration or reconstruction in periodontal treatment

Considering less of discussion about this tooth mobility treatment due to periodontal diseases using splinting technique nowadays. Therefore in this scientific meeting we shall discuss various kind of teeth splinting commonly used in periodontal treatment Splinting often considered as the best treatment but somehow there are operator in compliance of some important factors may occur the nightmare for the periodontal treatment.



Stephanie Adellia, drg., M.M., Sp.Ort

Indonesia

Sunday, 4th September 2022, Ballroom A, 13.35 – 14.10

“Common Problem in Clear Aligner: Posterior Open bites & How to Avoid Them”

Abstract

Unexpected posterior open bites are one of the most common - and frustrating - problems in clear aligner treatment. While intrusion of posterior teeth can occur and can be considered as the etiology of some posterior open bites, it would be over-simplistic to see this as the sole cause. This lecture will discuss about some different causes of mid-treatment posterior openbites and how to avoid them from the outset in most cases. Thus, dentists practicing clear aligner will be able to confidently evaluate posterior openbites when they occur, then design an effective aligner treatment that will finish with great results and few refinements.



Ferdinand Hadinata, drg., Sp.Perio

Indonesia

Saturday, 3rd September 2022, Ballroom B, 14.10 – 14.50

“Basic Principle of Bone Grafting”

Abstract

In daily practice, it is common to deal with insufficient alveolar crests that may require surgical augmentation for placing implants in a correct position. Guided bone regeneration is described as a surgical technique to increase limited alveolar bone for implant placement. There are four major principles that Wang et al. described as PASS that allow a more predictable GBR: primary closure to facilitate a protected environment from microbiota and mechanical forces, angiogenesis to promote de novo bone formation, space to assure the different compartments and avoid the collapse of the biomaterial, and stability of the blood clot. These requirements enable better results and reduce the incidence of possible adverse effects.

To overcome deficiencies in the atrophied crest, bioabsorbable membranes or reinforced nonresorbable barriers are used to cover bone graft material. Autologous bone from intraoral and extraoral sites was commonly used for periodontal and bone regeneration. Autologous bone is considered the gold standard because it is the only bone graft that has the following three properties: osteogenesis, osteoinduction, and osteoconduction. However, some risks related to these surgeries are still present, for example, soft tissue necrosis with graft exposure as well as poor revascularization of the mandibular cortical graft leading in many cases to an increased resorption of the grafted area. The other problem is harvesting autologous bone graft requires a secondary surgical site (i.e., a donor site) and increases postoperative patient discomfort. To address these problems, alternatives to autologous bone graft materials have been developed.

The main advantages of using bone graft substitutes are unlimited availability and reduced morbidity. Bone graft substitutes possess structural characteristics and/or chemical compositions similar to those of natural osseous tissue; accordingly, implantation of these substitutes promotes bone formation. Ideally, bone substitutes should be biocompatible (i.e., able to interface with the organism without eliciting an adverse response), osteoinductive, osteoconductive, safe, easy to use, and cost-effective. There are several categories of dental bone graft substitutes such as allogeneic bone, xenogenic bone, and alloplastic materials; each has unique properties.

Nowdays various bone graft products are commercially available worldwide and because of that, “what is the best bone graft material?” is one of the most common questions to ask between dental practitioners.



Dhanni Gustiana, drg., Sp.BM

Indonesia

Sunday, 4th September 2022, Ballroom B, 10.45 – 11.20

“Update Teknik Pencabutan dan Tatalaksana Perioperatif pada Pencabutan Gigi”

Abstract

American Association of oral and maxillofacial surgery mencatat 9 dari 10 orang memiliki setidaknya 1 gigi impaksi. Tindakan pengambilan gigi impaksi atau odontektomi memerlukan manajemen yang komprehensif mulai dari membaca ronsen, pemilihan kasus sesuai kompetensi, perencanaan Tindakan, anestesi, telaah penyulit dan pencegahan komplikasi pasca Tindakan. Rangkaian ini disebut manajemen perioperative yang bertujuan agar tidak ada masalah pada jaringan sekitar dan terjadi penyembuhan yang baik.



Alvin Tjiptarahardja, drg., Sp.Pros

Indonesia

Saturday, 3rd September 2022, Ballroom A, 13.30 – 14.10

“Prep to Send: Daily Practice Hack”

Abstract

Preparasi merupakan salah satu hal yang paling sering dilakukan dokter gigi dalam pekerjaannya. Namun tidak lah hanya preparasi yang perlu diperhatikan pada saat kita bekerja. Seperti contohnya bagaimana kita mencetak , berkomunikasi dengan lab dan pasien, memberikan info warna pada Lab, Dalam seminar ini akan dibahas berbagai topik tersebut dan tips apa yang bisa digunakan untuk mempermudah perawatan tersebut dalam sudut pandang seorang prostodonsia dan dental lab.



Dr. Taufan Bramantoro, drg., M.Kes

Indonesia

Sunday, 4th September 2022, Ballroom B, 08.00 – 08.30

**“How to boost dental healthcare marketing in post pandemic era:
cost effective, powerful and respect the ethics”**

Abstract

The pandemic has caused health service providers to revitalize safety and health insurance standards for themselves, workers, and patients. The revitalization of these standards absolutely will require significant financial support from a good clinic cash flow turnover. The cash flow of health service is considered good if the cycle of continuous service delivery to patients is happening. The efforts to maintain and increase the number of services provided to patients require optimal marketing efforts. Marketing that is carried out irregularly will lead to ineffective results and will risk offending the professional ethics. The focus of marketing strategies in post-pandemic can lead to the optimization of intangible aspects and the implementation of customer relationship management (CRM). Aspects of intangibles and CRM are aspects of service value that are not physically tangible, so that they can be more feasible to implement, more cost effective and have optimal marketing leverage.



Dr. Sindy Cornelia Nelwan, drg, Sp.KGA, K-KKA
Indonesia

Sunday, 4th September 2022, Ballroom B, 10.10 – 10.45

“Effective & Efficient Fissure Sealant Treatment for Uncooperative Pediatric Patients”

Abstract

Tingginya angka karies di Indonesia, yang tampak pada Hasil Riset Kesehatan Dasar (Riskesdas) Tahun 2018, menyatakan bahwa penduduk di Indonesia banyak yang mengalami penyakit karies gigi, dimana dalam riset yang menggunakan 300.000 sampel rumah tangga atau setara dengan 1,2 juta jiwa maka didapatkan hasil sekitar 45,3% yang mengalami penyakit karies gigi. Sehingga masih sangat perlu untuk mengupayakan usaha pencegahan karies gigi pada anak Indonesia.

Salah satu upaya pencegahan karies gigi adalah dengan melakukan fissure sealant. Fissure sealant adalah tindakan menutup ceruk yang dalam pada gigi dengan suatu bahan untuk mencegah masuknya sisa-sisa makanan dan pembentukan plak pada ceruk gigi, sehingga diharapkan tidak terjadi karies gigi.

Mengingat bahwa prevalensi yang tinggi terhadap karies gigi di Indonesia ini, maka tugas untuk mengusahakan pencegahan karies gigi ini, melalui fissure sealant ini tidak bisa hanya dilakukan oleh dokter gigi anak saja, tetapi hal ini harus dilakukan oleh semua dokter gigi umum juga, yang mempunyai kompetensi untuk melakukan pencegahan ini, sehingga diharapkan makin dapat mempercepat menurunkan prevalensi karies gigi di Indonesia.

Di dalam pelaksanaannya, aplikasi fissure sealant oleh dokter gigi umum seringkali terdapat kesulitan di dalam behavior management pasien anak, yang akhirnya dapat mengurangi keberhasilan perawatan, sehingga perlu beberapa kemampuan tambahan untuk mengendalikan hal ini. Pada hands on ini akan diberikan kemampuan pengaplikasian bahan fissure sealant yang mudah dan cepat, sehingga mengurangi angka kegagalan perawatan. Bahan fissure sealant yang digunakan mempunyai kemampuan perlekatan yang lebih baik dengan prosedur yang lebih cepat. Diharapkan nantinya dokter gigi lebih mudah untuk mengaplikasikannya, sehingga perawatan dapat maksimal.

Main Lecture

MAIN LECTURE

BALLROOM
Saturday, 3rd September 2022

Time	Room	Speaker	Topic	Room	Speaker	Topic
07.00 – 08.00	Ballroom A & B	Registration + Coffee break				
07.50 – 08.00	Ballroom A & B	Safety Briefing by Shangri-La Hotel				
08.00 – 08.30	Ballroom A & B	Prof. Dr. Dian Mulawarmanti, drg., MS., PBO		Hyperbaric Oxygen Therapy : New era complementary therapy in dentistry		
08.30 – 09.00	Ballroom A & B	Roberto Simanjuntak, drg., M.S., Sp.BM (K)		Management Inflammation and Post Op Pain in Dental Surgery		
09.00 – 09.10	Ballroom A & B	Discussion Moderator : Prof. Dr. Noengki P., drg., M.Kes.				
09.10 – 09.40	Ballroom A & B	Panglima Komando Armada Timur II Laksda TNI Dr. T.S.N.B Hutabarat		On Corfirmation		
09.40 – 10.20	Ballroom A & B	Ketua PB PDGI : drg. Usman Sumantri, M.Sc.		Pelayanan Kesehatan Gigi Di Era JKN		
10.20 – 10.30	Ballroom A & B	Discussion Moderator : Dr. Arya B.,drg., Sp.Ort.				
10.30 – 11.30	Ballroom A & B	Opening Ceremony				
11.30 – 13.00	Ballroom A & B	Lunch Break				
13.00 – 13.30	Ballroom A	Prof. Miho Terunuma, D.D.S., Ph.D. (Niigata University, Japan)	New era of basic science in Dentistry	Ballroom B	Prof. Takeyasu Maeda, DDS, PhD (Niigata University, Japan)	Bone quality in dental implantation
13.30 – 14.10	Ballroom A	Alvin Tjiptarahardja,drg.,Sp.Pro	Prep to Send – daily practice hack	Ballroom B	Dr. Eha Renwi, drg., Sp.RKG (K)	What We Need to Known in CBCT– 3D for Daily Dental Practice
14.10 – 14.50	Ballroom A	Marino Sutedjo, drg., Sp.KG	From macro to micro in endodontic workflows	Ballroom B	Ferdinand Hadinata, drg., Sp. Perio	Basic principle of Bone graft
14.50 – 15.00	Ballroom A	Discussion Moderator : Catherine, drg., Sp.Pro		Ballroom B	Discussion Moderator : Vivin A., drg., Sp.Pro	
15.00 – 15.40	Ballroom A	Dennis. drg., MDSc., Sp.KG(K-E)	Management of C-shaped root canal in daily practice	Ballroom B	Dr. Endah A.T. Wulandari, drg.,Sp.PM(K)	Distinguishing common Oral Disease in Daily Practice
15.40 – 16.20	Ballroom A	Anna Muryani, drg., Sp.KG (K-E)	Crown or not to Crown Root Canal Treated Teeth	Ballroom B	Onny Eryanto, drg	Mimicking Nature by Injectable Bioactive Material
16.20 – 16.30	Ballroom A	Discussion Moderator : Twi Agnita Cevanti., drg., Sp.KG		Ballroom B	Discussion Moderator: Kharinna, drg., M.Kes.	
16.30 – end	Coffee break					

MAIN LECTURE

BALLROOM

Sunday, 4th September 2022

[illegible]

Hands-On

Saturday, 3rd September 2022

SESI 1

PELANGI 1 (U shape)	PELANGI 2	PELANGI 3	NIRWANA 2 (classroom)	NIRWANA 3	Ballroom B
Dr. Endah A.T.W., drg., Sp.PM (K)	Onny Eryanto, drg	Dr. Eha Renwi, drg., Sp.RKG (K)	Dennis. drg., MDSc., Sp.KG (K-E)	Anna Muryani, drg., Sp.KG (K-E)	Dr. Taufan B., drg., M.Kes & Tim IKGM
Step by Step Diagnosis and Management of Oral Lesions	Mimicking Nature by Injectable Bioactive Material	Assesment Bone Density on Panoramic Radiography	Management of C-Shaped Root Canal In Daily Practice	Step by Step Approached for Posterior Direct Restoration of Tooth After Single Visit Endodontic Treatment	Praktek Pengelolaan Data Rekam Medis Kedokteran Gigi dalam Membangun Konten Pemasaran Digital yang Efektif dan Etis

Sunday, 4th September 2022

SESI 1

PELANGI 1	PELANGI 2	PELANGI 3	NIRWANA 2
Dr. Arya Brahmanda, drg., Sp.Ort	Widaningsih, drg., Sp.Pros	Marik Guizot, drg., Sp.BM	Vivin Ariestania, drg., Sp.Pros
Step by step: Double Impression Technique dan Intraoral Scan In Clear Aligner Treatment	Technique of Overcoming and Making Temporary Dentures In Patient In TMD	An Alternative Treatment for Oral Rehabilitation	Temporary anterior fixed partial denture in one visit

SESI 2

PELANGI 1	PELANGI 2	PELANGI 3	NIRWANA 2
Dhanni Gustiana, drg., Sp.BM	Aulia Yudha, drg., Sp.Perio	Chaterine D.A.M, drg Sp.Pros, Meinar N.A., drg., Ph.	D Dr. Sindy Cornelia N, drg., Sp.KGA (K)
Teknik Pengurangan Tulang dan Disain Flap pada Pencabutan Sulit	How to Achieve a Successful Splinting? Here Are Some Tips	Precision Impression for Successful Treatment in Edentulous Patient	Effective & Efficient Fissure Sealant Treatment for Uncooperative Pediatric Patients

SESI 3

PELANGI 1	PELANGI 2	PELANGI 3	NIRWANA 2
Prof. Ida Bagus Narmada, drg., Sp.Ort (K)	Karlina Samadi, drg., Sp.KG(K-E)	John Gunawan L., drg., Sp.Perio	Aprilia, drg., Sp.KG
Removable Appliances: Correction of class II/1 malocclusion by bite Jumping Appliances	What The Right Restoration Can Be Done After Endodontic Treatment	Improving Dental Treatment with Diode Laser Technology	Direct Composite Posterior Restoration in Daily Practice

POSTER PRESENTATION SCHEDULE



**JADWAL POSTER PRESENTATION
DENTISPHERE 5**

SESI 1

No.	Tanggal Presentasi	Waktu	Kode Poster	Nama Peserta	Judul Artikel
1	03 September 2022	09.00 - 12.00	P-01	Vivin Ariestania	Citotoxicity Zirconia Y-Tzp Nanoparticles With Binder Pva-Peg On Human Umbilical Mesenchymal Stem Cell (Hucmscs)
2	03 September 2022	09.00 - 12.00	P-02	Meylisa Giovannie Kusuma Thendean	The role of binahong leaf extract (Anredera cordifolia) into wound healing in oral cavity
3	03 September 2022	09.00 - 12.00	P-03	Kharinna Widowati	Traumatic Ulcers in Patient Using Fixed orthodontic Appliances Who Has Moderate Oral Hygiene (Case Report)
4	03 September 2022	09.00 - 12.00	P-04	Aulia Dwi Maharani	Increasing the level of Dental Health Knowledge through Dental Health Promotion for Elementary School Student in SDN Nyapar 1 Sumenep Regency , East Java Province
5	03 September 2022	09.00 - 12.00	P-05	Fanny Margaretha Laihad	Case Report: Hyperbaric Oxygen Therapy in Dental surgery under General Anesthesia Anticipated an invasive fungal infection
6	03 September 2022	09.00 - 12.00	P-06	Kristanti Parisihni	The Effectivity of Stichopus hermanii Ethanolic Extract as Prophylaxis and Therapy of Oral Candidiasis
7	03 September 2022	09.00 - 12.00	P-07	Agni Febrina Pargaputri	The Hepatocytes Damage of Liver in Oral Candidiasis Immunosuppressed Rats Model Given Hyperbaric Oxygen Treatment
8	03 September 2022	09.00 - 12.00	P-08	Paulus Budi Teguh	The Effect of Pineapple Peel Extract As a Denture Cleanser On Flexural Strength in Thermoplastic Nylon Valplast and Lucitone FRS
9	03 September 2022	09.00 - 12.00	P-09	I Gusti Ayu Made Oka Lestari	Immediate Denture As An Artificial Tooth That Helps A Person's Appearance (CASE REPORT)
10	03 September 2022	09.00 - 12.00	P-10	Sinta Puspita	Apicoectomy and Enucleation on Maxillary Central Incisor With Radicular Cyst (Case Report)
11	03 September 2022	09.00 - 12.00	P-11	Faizah Hanum	Perbaikan Saluran Pernafasan pada Pasien Mouth Breather dengan perawatan ortodonti
12	03 September 2022	09.00 - 12.00	P-12	Caecilia Indarti	Analysis Of Medical Records Documents Filling Completeness Outpatient Of Nala Husada Dental Hospital
13	03 September 2022	09.00 - 12.00	P-13	Rizko Wira Artha Megantara	Management of Completely Edentulous Resorbed Mandibular Ridge with Flabby Tissue Using Suction Method Impression Technique and Lingualized Posterior Occlusal Scheme: A Case Report
14	03 September 2022	09.00 - 12.00	P-14	Novendy Yoyada	Treatment of Epulis Granulomatose Using Laser
15	03 September 2022	09.00 - 12.00	P-15	Mardiyanto Riski Hartono	Potensi Nutrasetikal Dari Laut Pada Proliferasi Dan Diferensiasi Sel Punca (Marine Nutraceuticals Potential In Proliferation And Differentiation Of Stem Cells)
16	03 September 2022	09.00 - 12.00	P-16	Yulie Emilda Akwan	"Do Parents' Knowledge and Perception on Children Oral Health Differ Across Different Level of Education, Different Generation, and Different Residence?"
17	03 September 2022	09.00 - 12.00	P-17	Eddy Hermanto	Combination Therapy of Closed Reduction and Incision Drainase Cit Treatment of Negkected Mandibular and Submandibular Absces
18	03 September 2022	09.00 - 12.00	P-18	Restika Anindya Pinasti	Determinants to Increase Dental Care During Pregnancy: A Systematic Review
19	03 September 2022	09.00 - 12.00	P-19	Moh. Basroni Rizal	Comparison of Silica Content in Pneus Monodon Shell Powder Before and After Depigmentation Process as a Candidate for Dental Materials Restoration
20	03 September 2022	09.00 - 12.00	P-20	Meinar Nur Ashrin	Rehabilitation of Partially Edentulous Posterior Patient Combined with Bimaxillary Protrusion with an Immediate Removable Partial Denture : a Case Report
21	03 September 2022	09.00 - 12.00	P-21	Dianty Saptaswari	Pemasangan Implan Gigi Pada Pasien Diabetes Mellitus

**JADWAL POSTER PRESENTATION
DENTISPHERE 5**

SESI 2

No.	Tanggal Presentasi	Waktu	Kode Poster	Nama Peserta	Judul Artikel
1	03 September 2022	13.00 - 16.00	P-22	Yongki Hadinata Wijaya	Aesthetic Rehabilitation In Malpositioned Maxillary Incisors
2	03 September 2022	13.00 - 16.00	P-23	Annisa Listya Paramita	Case Report: treatment of bruxism in pediatric dentist
3	03 September 2022	13.00 - 16.00	P-24	Endah Wahjuningsih	Fibroblasts And Collagen Density In Chronic Periodontitis Post Nannochloropsis Oculata Therapy
4	03 September 2022	13.00 - 16.00	P-25	Hansen Kurniawan	Antibacterial Potency of Moringa Oleifera Extract Combined with Propolis to Mixed Periodontopathogenic Bacteria
5	03 September 2022	13.00 - 16.00	P-26	Dyah Ayu Retnowulan	Happiness With New Smile After Composit Filling In The Fractured Teeth
6	03 September 2022	13.00 - 16.00	P-27	Fitria Rahmitasari	Crosslinking Agents Corporate Collagen- Hydroxyapatite To Improve Scaffold Properties In Bone Regeneration
7	03 September 2022	13.00 - 16.00	P-28	Dwi Setianingtyas	Necrotizing periodontal disease as a manifestation of post covid-19 syndrome
8	03 September 2022	13.00 - 16.00	P-29	Shintya Rizki Ayu Agitha	Ras determination using non metric dental traits
9	03 September 2022	13.00 - 16.00	P-30	Onge Victoria H	Cemented-retained Implant-suported Single-tooth Restorations in the Molar Maxillary Region : After one year observation
10	03 September 2022	13.00 - 16.00	P-31	Ari Rosita Irmawati	Treatment of intruded permanent incisor in a 8 years old children, a case report
11	03 September 2022	13.00 - 16.00	P-32	Anindita Apsari	Case Management of Patients Using Implant Supported Solitary Crown with Gingival Porcelaine for Aesthetic Improvement and Proportional Teeth Anatomy
12	03 September 2022	13.00 - 16.00	P-33	Istien wardani	Melanotic Neuroectodermal Tumor In The Maxillary Anterior In Baby
13	03 September 2022	13.00 - 16.00	P-34	Dimas Iman	Management of Class I Angle with Bilateral 180 Degree Rotated Maxillary Canines and Second Premolar Impaction: A Case Report
14	03 September 2022	13.00 - 16.00	P-35	Aprilia	Effect Of Encapsulation Beta Tri Calcium Phosphate (β -TCP) From The Synthesis Of Anadara Granosa Shell As Pulp Capping Material Against Inflammatory Cytokines IL-10 And TGF- β
15	03 September 2022	13.00 - 16.00	P-36	Ayulistya Paramita	The Effect Of Parents' Education Level With Children's Dental And Mouth Health After Educate With Animation Video
16	03 September 2022	13.00 - 16.00	P-37	Budi Handayani	Treatment of Angle Class I Malocclusion with bimaxillary protrusion and crowding : A Case Report
17	03 September 2022	13.00 - 16.00	P-38	Cane Lukisari	Primary Herpetic Gingivostomatitis pada anak-anak
18	03 September 2022	13.00 - 16.00	P-39	Linda Rochyani	In vitro study of calcium hydroxide microencapsulation with Stichopus hermanni as pulp capping material
19	03 September 2022	13.00 - 16.00	P-40	Nafiah	Herpetic Stomatitis Caused Stress
20	03 September 2022	13.00 - 16.00	P-41	Meralda Rossy Syahdinda	Treatment of severe crowding with constricted arches in class I Malocclusion Patient: A case report
21	03 September 2022	13.00 - 16.00	P-42	Nur Tsurayya Priambodo	The relationship between recurrent aphthous stomatitis and psychological stress in patients at RSGM Nala Husada
22	03 September 2022	13.00 - 16.00	P-43	Rere Gathy Asdika	Effect of Additional Hydroxyapatite on Diametral Tensile Strength Glassionomer as Fissure Sealant
23	03 September 2022	13.00 - 16.00	P-44	Nina Nilawati	How I Treat Epulis in a Five Years Old Child

SHORT LECTURE SCHEDULE



Short Lecture Speaker Presentation Schedule, Saturday, September 3, 2022

Pelangi 1 Room

Time	Code	Article title	Presenter
Sesi 1			
13.00- 13.10	P1.1	IL 17 and TRAF 6 expression on administration of Nannochloropsis Oculata during Orthodontic Relaps	Arya Brahmanda
13.10-13.20	P1.2	Rapid Palatal Expansion and Fixed Orthodontic Correcting Bilateral Ectopic Canines and Anterior Crossbite in Adolescence	Charissa Roderica Hoediono
13.20-13.30	P1.3	Downregulations of Heat Shock Protein 70 Impairs Osteogenic Differentiation in Nannochloropsis Oculata application during Orthodontic tooth movement	Noengki Prameswari
13.30-13.40	P1.4	Apicoectomy for Periapical Lesion Treatment on Post Endodontic First Maxillary Premolar Tooth (case report)	Diana Soesilo
13.40-13.50		Discussion	
Sesi 2			
14.00- 14.10	P1.5	Periapical radiopacities: radiographs interpretation and differential diagnosis	Sarianoferni
14.10-14.20	P1.6	The Role of Cone Beam Computed Tomographic in Odontology Forensic Identification	Yessy Andriani
14.20-14.30	P1.7	Influence Of Branding To Brand Knowledge In Nala Husada Dental Hospital Universitas Hang Tuah	Ghita Hadi Hollanda
14.30-13.40		Discussion	

Pelangi 2 Room

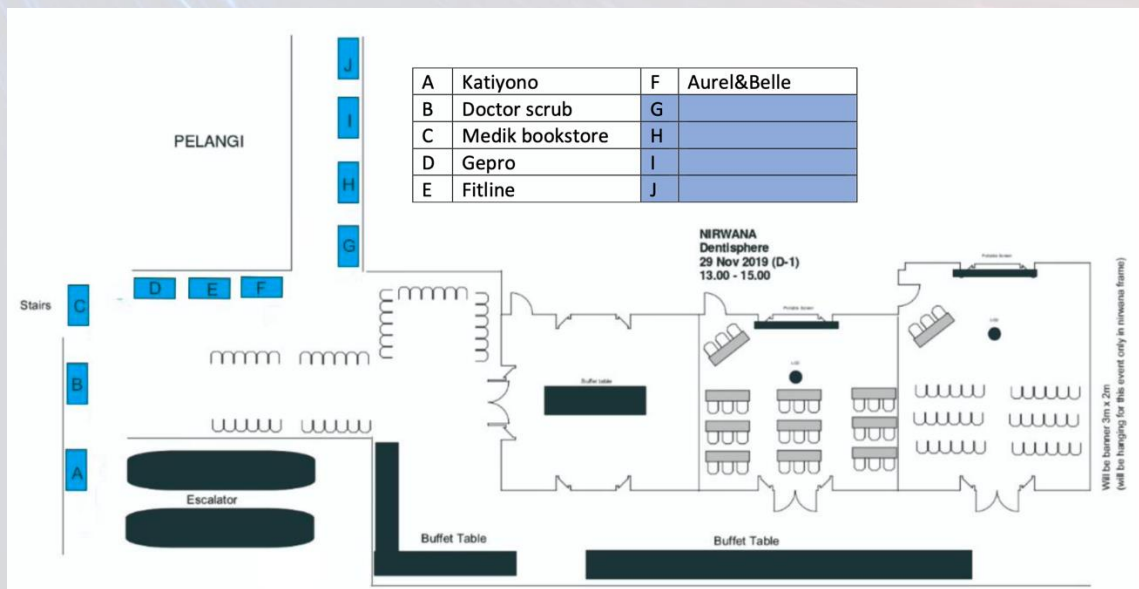
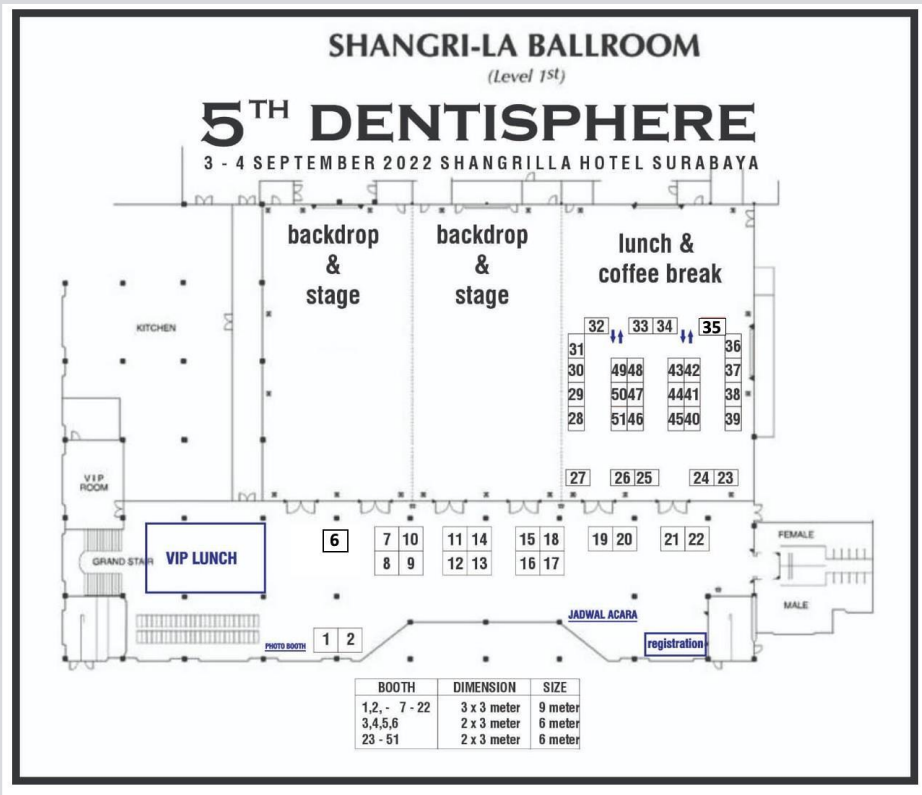
Time	Code	Article title	Presenter
Sesi 1			
13.00- 13.10	P2.1	Risk Factors and Complaintsof Musculoskeletal Disorders (MSDs) at Dentists of Primary Health Care Centers	Murniwati
13.10-13.20	P2.2	Necrotizing Ulcerative Gingivitis as a Manifestation of Acute Leukemia: a Case Report	Dwi Andriani
13.20-13.30	P2.3	Fibromatous Epulis : a case report	Yoifah Rizka Wedarti
13.30-13.40	P2.4	Squid Ink (Loligo sp.) as an Adjuvant Therapy in Periodontology	Yokhebed Janice C
13.40-13.50		Discussion	
Sesi 2			
14.00- 14.10	P2.5	Oral Traumatic Ulcers Healing Process Post Topical Application of Salmon Skin Extract	Dian Mulawarmanti
14.10-14.20	P2.6	The Effectiveness Of Stchopus Hermanni Nanaparticle Gel On Traumatic Ulcer	Rima Parwati Sari
14.20-14.30	P2.7	Antiinflammatory Effect Of Salmon Skin Gel for Labial Ulcer Treatment	Syamsulina Revianti
14.30-13.40	P2.8	Management Of Traumatic Immature Dental Injury In 8 Years Old Patient	Yufita Fitriani
14.40-13.50		Discussion	

Pelangi 3 Room

Time	Code	Article title	Presenter
Sesi 1			
13.00- 13.10	P3.1	Impact of Orbital Prosthesis design and psylhological Approach for Succesful Treatment in Children	Widaningsih
13.10-13.20	P3.2	Is Epinephrine Alone Enough To Treat Anaphylactic Shock After Infiltration Anasthetic Injection Using Pehacaine 2%?	Amelia Elizabeth Pranoto
13.20-13.30	P3.3	Pathogenesis of Mucormycosis in Immunocompromised and Immunocompetent Patient after Tooth Extraction	Annisa Ayu Permatasari
13.30-13.40	P3.4	Regeneration Process On Bone Defect Using Membrane Of Cuttlefish Cartilage (Sepia Sp.)	Widyastuti
13.40-13.50		Discussion	
Sesi 2			
14.00- 14.10	P3.5	Molecular weight characteristic of chitosan powder with variation synthesis	Sularsih
14.10-14.20	P3.6	Addition Of Zirconium Dioxide (Zro2) Nano Particle Filler On Heat Cured Acrylic Resin To The Physical Properties Of Acrylic Resin	Arifzan Razak
14.20-14.30	P3.7	Chararacteristic of effervescent Acanthus Licifollus L Extract on Properties of Acrylic resin Material	Widyasri
14.30-14.40	P3.8	In Vitro Study Effervescent Sargassum Sp. Towards Candida Albicans And Compressive Strength Of Silicone-Based Softliner	Chaterina Diyah Nanik K
14.40-14.50		Discussion	

Exhibition

6	Pepsodent	29	THC
7	Graha Mitra	30	
8	MDI Shofu	31	BS
9	Hympari	32	BS
10	Interbat	33	Sentralindo
11	Osstem	34	Sentralindo
12	AO	35	MDI Shofu
13	Onemed	36	Pramita
14	Onemed	37	
15	Phapros	38	Cobra
16	Apex InnoM	39	Cobra
17	Ohawe Oxy	40	Citydent
18	Revoden	41	
19	Doremi	42	
20	Dentalities	43	KlikDental
21	MGS	44	Meditech
22	SDS	45	Citydent
23		46	Raya Dental
24	Mandala M	47	Cipta
25	Denstply	48	Cipta
26	3S	49	Thomasong
27	DG Dent	50	Thomasong
28	DG Dent	51	Thomasong



ACKNOWLEDGEMENT SPONSORS

Pepsodent

PRAMITA *Lab*

Laboratorium Klinik

PRAMITA

Mengutamakan Kualitas Diagnosis & Pelayanan



Neora

Striving for Excellence





GEpro-id

Boneka Gigi



Perlengkapan Klinik



Media Edukasi



Lifestyle & Souvenir



Order chat CS whatsapp di nomor:
0823-1451-6161



PUTTY

I-sil premium putty



EsFlow®

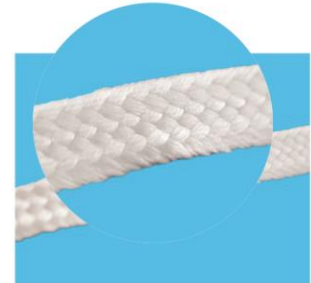
Nanohybrid Flowable Composite Resin

95%
overall
rating



"EXCELLENT
VISCOSITY. EASY
TO DISPENSE,
CONTROLLED
FLOW INTO PREP
AND ADAPTS
WELL."

Fiber Splint



Retrapak

Knitted Retraction Cord



Dental Needles

Silicone Coating Significantly
Reduces Pain and Tissue Trauma



31G/XS (0.26 x 12mm)	30G/s (0.3 x 21mm)
30G/s (0.3 x 16mm)	30G/L (0.3 x 25mm)
	27G/L (0.4 x 30mm)

Soft Tissue Burr



Special Burr Finishing



Endo Access non cutting edge



Low Speed Carbide



Resin Cement

and many mores...

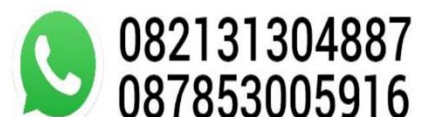
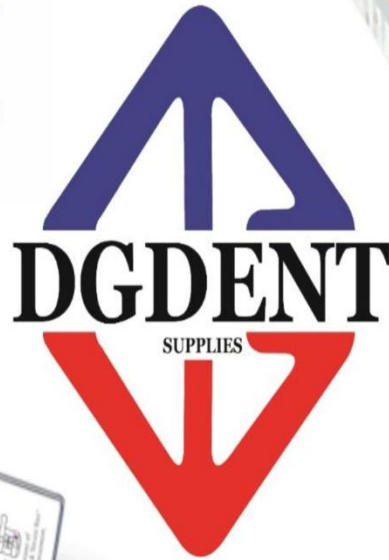


Contact and follow us at:



Lotus DS
PLUS

Self-Ligating Bracket System
Passive | Interactive | Hybrid



happy

5
YEAR

ANNIVERSARY
For
DENTISPHERE

Wishing a more great successes in the future

mdi
MORITA DENTAL INDONESIA



MORITA
SIGNO G10

The New Feeling
of New Freedom in
Dentistry



MORITA
VERAVIEWEPOCS 3D



- Giving the great Panoramic Image
- 3D Images for Implant Planning
- Cephalometric, CBCT



MORITA

**TRI AUTO
ZX2**



MORITA
**DentaPort ZX
Apex Locator**



LEDEX™ WL-090+

With 8 Powerful mode and
Plaque Inspection



LAFOMED

**PREMIUM
AUTOCLAVE PRESSURE
STEAM STERILIZER**



SHOFU BEAUTIFIL

Composite Series



BeautiBond



FL-Bond



Glaslonomer FX ULTRA



Injectable X, XSL



BeautiCem SA



Beautifil-Bulk



Beautifil II LS

SIGER

V1000

- Intelligent
- Efficient
- Affordable
- Super Slim Design



MORITA

frasaco

SIGER

DÜRR
DENTAL

LAFOMED



SHOFU



saeyang
DENTMATE

apixia™
DIGITAL IMAGING

andy®
Good Smile Design

NIC
PASSION FOR INNOVATION

DiaDent®
PASSION FOR INNOVATION

Jl. KH. Hasyim Ashari No. 233K Cideng, Gambir Jakarta Pusat 10150 Indonesia
Phone Jakarta : +62 21 2984511, Surabaya : +62 813225 9463 Email : admin@moritadentalindo.com

PROMO DENTISPHERE 5

Berlaku hanya pada Event 5th Dentisphere

6X BAYAR

**PROMO INVESTASI
INTRAORAL SCANNER**

DISKON 90 JUTA

PLANMECA

PLANMECA EMERALD S

**FREE
LAPTOP &
SOFTWARE**



PEMBAYARAN	
Pembayaran 1	Rp 150.000.000
Pembayaran 2	Rp 150.000.000
Pembayaran 3	Rp 150.000.000
Pembayaran 4	Rp 150.000.000
Pembayaran 5	Rp 150.000.000
Pembayaran 6	Rp 150.000.000
TOTAL	Rp 900.000.000

SHINING 3D™

6X BAYAR

**PROMO INVESTASI
INTRAORAL SCANNER**

DISKON 23 JUTA

SHINING AORALSCAN 3

**FREE
LAPTOP**



PEMBAYARAN	
Pembayaran 1	Rp 50.000.000
Pembayaran 2	Rp 40.000.000
Pembayaran 3	Rp 35.000.000
Pembayaran 4	Rp 35.000.000
Pembayaran 5	Rp 35.000.000
Pembayaran 6	Rp 27.000.000
TOTAL	Rp 222.000.000

Disc. 13%

COXO
Professional Dental Suction System

Aerosol Suction System

~~Rp 16.650.000~~
Rp 14.485.500

Disc. 13%

biodinâmica

Cariestop + Microbrush

~~Rp 444.000~~
Rp 386.280

GC 100 Years of Quality in Dental

Disc. 5% / bundling

**BUNDLING
2 COMPOSITE
& 1 BONDING**

All Composite & Bonding GC

Pembayaran **Lebih Mudah**
dengan Fitur **Payment Link**

Gunakan Link Resmi Cobra Dental yang tercantum pada brosur ini untuk terhindar dari penipuan

Berlaku untuk :



Spesial untuk pemegang BCA Card,
dapat menggunakan Reward Point BCA.



**BISA
CICIL
UP TO
24X**

*Syarat dan ketentuan berlaku



Fractured anterior tooth restored with Tetric® N-Ceram



Dr Ali Haydar Özoglu, 2013
Adana, Turkey



Final situation

OPTRAGATE

Alat retraksi bibir dan pipi. Materialnya latex free, elastis dan fleksible sehingga nyaman untuk digunakan dan membantu pasien untuk tetap membuka mulutnya selama perawatan gigi



TETRIC N BOND UNIVERSAL

Merupakan adhesive single-component, light curing, untuk bonding restorasi direct dan indirect dengan penggunaan self-etch atau total etch. Kekuatan bonding tinggi (>25 MPa) pada dentin basah maupun kering

TETRIC N LINE

Terdiri dari komposit konvensional layering 2mm, dan komposit bulkfill layering 4mm. Teknologi Ivocerin dan Aessencio sehingga memberikan estetika tinggi. Spherical Filler memberikan efek Chameleon terhadap struktur gigi



OPTRASCULPT

Instrument contouring untuk non-stick shaping sculpable composite yang belum terpolimerisasi yang anti lengket. Memiliki 5 attachment: pad 4mm, pad 6mm, ball, pointed tip, dan chisel.

FLUOR PROTECTOR

Varnish fluor untuk perlindungan gigi tdk karies dan erosi gigi. Memiliki flow sempurna yg dapat mencapai hingga interdental, fissure, dan area sulit dari gigi. Warna bening sehingga tidak mengganggu estetika & post aplikasi pasien hanya perlu menunggu 45 menit utk bisa makan dan minum secara normal



VARIOLINK ESTHETIC LC & DC



MULTILINK N (DC)



MULTILINK SPEED (DC)



peakosil
Impression Materials



+6281295344191



+628161830505



Doremi_Dental



Doremi_Dental



Doremi Dental
Online



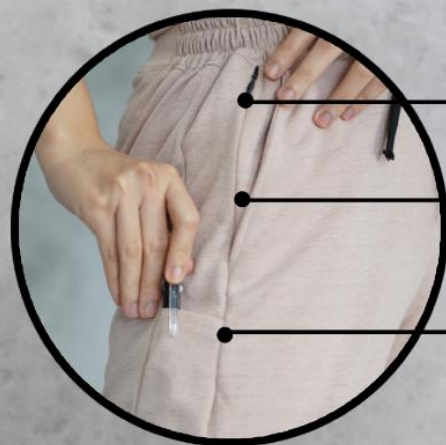
Doremi_Dental

FITLINEWEAR

CASUAL FIT

fresh looks, stretch as always

stretchable	●●●●●
breathable	●●●●○
thickness	●●●●○



Scan me!

FITLINEWEAR



KUNJUNGI BOOTH KAMI DAN
DAPATKAN PROMO MENARIK

MGS
DENTAL SUPPLY

PT. MITRA GIGIPEDIA SEJAHTERA  TOKODENTAL  WWW.TOKODENTAL.COM






Aurel & Belle Boutique



—DS—
DoctorsScrub



 Doctors.scrub

 Doctors Scrub

 Doctors Scrub ID  087731371870

Apex InnoMED

ethoss

Grow
Stronger_

AOM
AUSTRALIAN DENTAL
MANUFACTURING

NBF GINGIVAL GEL

LUX SUTURES

LM

feel the
difference

blue m
oxygen for health

Ora-Aid

Beutlich
PHARMACEUTICALS, LLC
Since 1954

Dx
Dentex

DIASHINE
SOGA

Versah
THE OSSEODENSIFICATION COMPANY



VP INNOVATO HOLDINGS



MID YEAR

FLASH SALE

FIRZT
andy
HDR-500
Version 2 unit

GIFT VOUCHER
5.000.000

FIRZT **andy**

MID YEAR

FLASH SALE

FIRZT
GIFT VOUCHER
3.000.000

FIRZT **andy**

MID YEAR

Get Free

MaxFill-G / MaxFill-P
Auto-purification system

SALE

MID YEAR

andy
HDR-500

Get Free

FIRZT

SALE

MID YEAR

Get Free

A1 Apex Locator

M3-Pro

SALE

MID YEAR

Get Free

PTX

I-MOTOR

SALE

andy **PTX** **FIRZT**

REFINE **bio-art** **M3-Pro** **GOLD**

WOODPECKER **DTE** **UDG**
UNITED DENTAL GROUP



CATALOG



valche_bestdentistpartner



+62 877-7533-8904

**X-Ray Portable
HYPERLIGHT**



DISKON LANGSUNG 1.5JT
PLUS VOUCHER DISKON 500 RIBU

Price Rp. 19.880.000,-

Fast-Pack Pro & Fast-Fill
Cordless Obturation System



DISKON LANGSUNG 1.5JT
PLUS VOUCHER DISKON 500 RIBU

PRICE Rp. 15.780.000,-

Ultra X
Endo Activator



DISKON LANGSUNG 300 RIBU
PLUS VOUCHER DISKON 250 RIBU

PRICE Rp. 4.880.000,-

E-CONNECT S
Smart Motor with Built-in Apex Locator



DISKON LANGSUNG 1.5JT
PLUS VOUCHER DISKON 500 RIBU

PRICE Rp. 15.880.000,-

E-CONNECT Pro E-PEX Pro



FREE APEX
DISKON LANGSUNG 1.5JT
PLUS VOUCHER DISKON 500 RIBU

PRICE Rp. 13.280.000,-

NanoPix
Intraoral X-Ray Sensor



Size 1
PROMO Rp. 19.880.000,-
Price Rp. 20.880.000,-

PLUS VOUCHER DISKON 500 RIBU

NanoPix
Intraoral X-Ray Sensor



Size 2
PROMO Rp. 20.880.000,-
PRICE Rp. 22.880.000,-

PLUS VOUCHER DISKON 500 RIBU

Portable X-Ray Unit
Hyperlight G



DISKON LANGSUNG 1.5JT
PLUS VOUCHER DISKON 500 RIBU

Price Rp. 12.800.000,-

Paket Bundle
HyperLight & NanoPix



PLUS VOUCHER DISKON 500 RIBU

Size 1 : Rp. 36.300.000,-
Size 2 : Rp. 37.300.000,-

Paket Bundle
HyperLight G & NanoPix



PLUS VOUCHER DISKON 500 RIBU

Size 1 : Rp. 30.880.000,-
Size 1 : Rp. 31.880.000,-

E-Xtreme
Compact Endomotor



DISKON LANGSUNG 750 RIBU
PLUS VOUCHER DISKON 250 RIBU

Price Rp. 6.880.000,-

UltraMint Pro
Ultrasonic Scaler with Water Container



DISKON LANGSUNG 400 RIBU
PLUS VOUCHER DISKON 250 RIBU

Price Rp. 7.980.000,-

Curing Pen
4LEDs Curing Light



DISKON LANGSUNG 400 RIBU
PLUS VOUCHER DISKON 250 RIBU

Price Rp. 4.380.000,-

AirPex
Wireless Apex Locator



DISKON LANGSUNG 400 RIBU
PLUS VOUCHER DISKON 250 RIBU

PRICE Rp. 3.280.000,-

E-Pex Pro
True Apex Locator



DISKON LANGSUNG 300 RIBU
PLUS VOUCHER DISKON 250 RIBU

PRICE Rp. 2.880.000,-

- Harga Produk di atas berlaku pada saat Event Seminar / HO berlangsung
- Voucher Diskon berlaku hingga 7 hari dari Event
- Info lebih lengkap silahkan kontak marketing Team Revoden Asia

Contact Us  +62 823-2088-0388 (Siska)



Oxygene® is a registered trademark
of Oxyfresh World Wide Inc. USA
SAFE - PROVEN - EFFECTIVE

EXCELLENT ANTIBIOFILM PROPERTIES - NO PLAQUE

WITH OXYGENE®
(CHLORINE DIOXIDE)



A New
Reason to
Smile

OXYFRESH MOUTHRINSE
& DENTAL GEL



5 Days Post-Op



9 Days Post-Op



2 Weeks Post-Op



6 Months Post-Op

All photos taken at home
without prophylaxis.

Case report from dr. Lauralee Nygaard, DDS, MS, PS

“My sutures were in for 6 weeks.
I was in disbelief that it could be so easy.”

A happy connectivity tissue grafting patient
- Karlene -

FAST HEALING LONG TERM DAILY USE



24 Hours Post-Op



3 Days Post-Op



5 Days Post-Op



8 Days Post-Op

for information product
SCAN QR CODE

oxyfresh.id



Chat now 0852-1116-8398

PT. Ohawe Indonesia
Ruko Crystal Lane No. 7, Alam Sutera - Tangerang Selatan
Phone : (021) - 30429917



X5 SERIES NEW

FASHION

one of the lifestyle



Full Keramik
Spittoon



Instrumen Tray
Gaya Eropa



Kontrol Panel
Sentuh



Cahaya Operasi 6 Titik
Gaya Eropa



Kontrol Pedal Kaki
Mewah Multifungsi



Asisten Tray
Layar Sentuh



9 Program Memori
Untuk 3 Dokter



Asisten Tray 3 Sendi
yang Mudah digeser



Disinfektan
ASTER Sistem



3 Way Import



Spittoon Disinfektan
yang Mudah dilepas



Sistem Penyimpanan
Air Ganda



Cover Box Sampling
yang Mudah dilepas



Penutup Filter Ganda
yang Mudah diputar



X5

Cingol Dental Unit X5 SERIES



Memiliki Beragam Fitur
yang Nyaman



Sistem Perlindungan
yang Aman



Spittoon Disinfektan
yang Canggih



Instrumen Tray Terbuat
dari Bahan Metal yang Kuat



CINGOL

SCAN ME :
KEMENKES RI AKL 10605916978



Design
Intelligence
Award
2017



DISTRIBUTOR TUNGGAL CINGOL DI INDONESIA



linktr.ee/grahamitraalfaindo

Concern about International dental Need our
Goal is your Obliging Laugh!

Office Pusat

Jl. Raya Manukan Kulon No. 40 - Surabaya
Phone : (0878 5353 5399) / (031 - 99340549)
Email : grahamitraalfaindo@gmail.com
Website : grahadental.com
IG : @grahadental.id
Warehouse
Jl. Pergudangan Mutiara Margomulyo D8
Surabaya

Office Jakarta

Jl. Swasembada Barat XI No. 107
Kebon Bawang Tanjung Priok Jakarta Utara
Phone : (0878 8662 2626 / 0855 1136 868)

Office Tangerang

Ruko Ginza Green Village Blok D No. 10
Phone : (0851 5661 1559) / (0822 6455 1678)

Hydroxyapatite Bone Graft

BONEFILL

STERILE R powder

Murni mineral alami hydroxyapatite

KEUNGGULAN BONEFILL :

- * Memperkuat struktur masa tulang utama.
- * Aman untuk digunakan.
- * Mudah digunakan.



Phapros

Orabloc®

(articaine hydrochloride 4% epinephrine 1:100,000) injection



Anesthetic performance is better than other amides



Phapros



Orthodontic Lab Kepercayaan Anda
Jl. Walikota Mustajab 59C
Surabaya - Indonesia

Expanders



Transversal expansion

Untuk ekspansi transversal di rahang atas dan rahang bawah

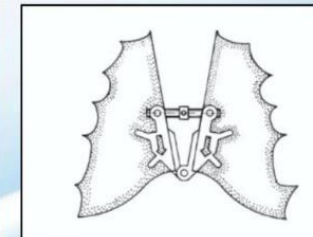


Ekspansi 3 Dimensi

Menggerakkan gigi anterior ke arah labial dan gigi posterior ke arah transversal.

Sector expansion

Untuk ekspansi sectoral di rahang bawah dan rahang atas.



Fan Type expansion

Di gunakan manakala anterior section membutuhkan ekspansi yang lebih besar dari pada posterior. Untuk memperbesar inter canine width atau ekspansi buccal.



RPE Rapid Palatal Expander.
Ekspansi sampai dengan 12mm.



Lower Jaw Slim Line Expander.
Ekspansi bisa men capai 12mm atau 16mm.

Retainers



Clear Retainer



Wrap Around Retainer



Hawley Retainer



Fix Retainer

Splints dan Guards



Bruxism Splint



Night Guard/ Mouth Guard

Arches



Space Regainer



Space Maintainer

Ortho Lab Solution adalah profesional dental laboratory yang fokus pada pelayanan pembuatan berbagai macam alat penunjang perawatan orthodontic. Produk-produk kami di buat dengan menggunakan bahan-bahan berkualitas tinggi. Ortho Lab Solution memiliki high qualified lab technician yang memperoleh pendidikan dan ketrampilan di orthodontic lab di Jerman.

Ortho Lab Solution juga melayani pembuatan Accusmile aligners yang di support oleh Forestadent Germany. Kami adalah lab dental di Indonesia yang pertama melayani pembuatan aligners secara lokal.

Kepuasan dokter dan kenyamanan pasien menjadi hal yang sangat penting buat kami

Jika dokter membutuhkan atau ingin mendiskusikan solusi perawatan orthodontic dengan menggunakan bantuan lab kami, dokter bisa menghubungi kami di alamat berikut:

Telephone: +62 31 5346093

Mobile/ WA: +62 812-5261-4640

Email: ortholabsolution@gmail.com

Website: <http://ortholabsolution.com>



**Show The World
Your Perfect Smile**

Mandy

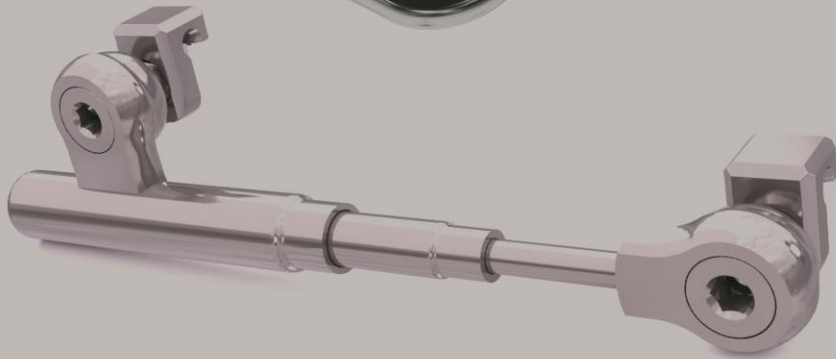
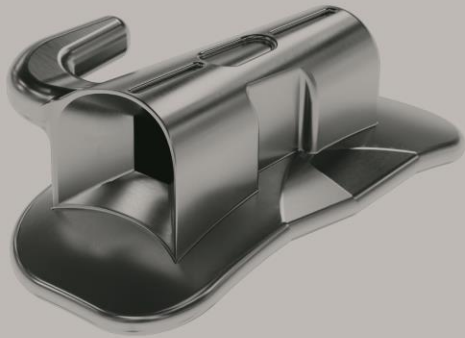
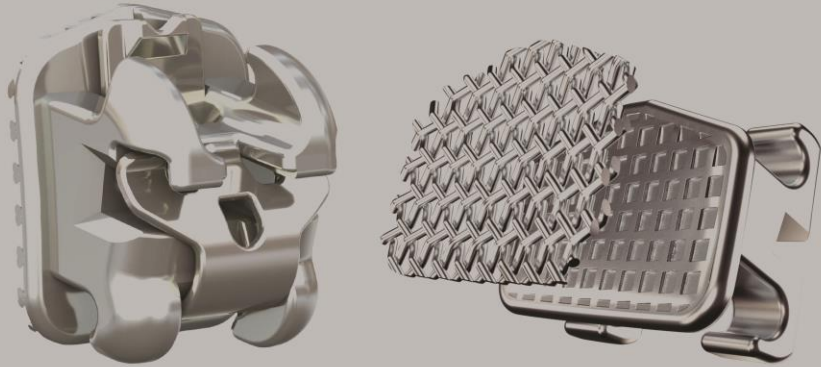
Maudy Ayunda

Happy User of KLAR &
KLAR Brand Ambassador

Chat KLAR assistant-mu
sekarang untuk senyum
sempurna!

 0-8787-0-108-108





20 22 **PROMO PAMERAN** CITYDENT
Promo berlaku sampai tgl 3 & 4 September S&K berlaku

MESIN STERILIZER

D011 - 16 L 220V / 1400W 520x340x320mm 230x350mm 29 Kg

DOLPHIN CLASS N **FREE! 1 PCS!**

RP. 11.000.000

BELANJA SEKARANG!
@CITYDENT.ID

20 22 **PROMO PAMERAN** CITYDENT
Promo berlaku sampai tgl 3 & 4 September S&K berlaku

ROSON N1

RP. 39.500.000 dari harga Rp. 58.611.000

FREE! KOMPRESSOR IZUMI

BELANJA SEKARANG!
@CITYDENT.ID

20 22 **PROMO PAMERAN** CITYDENT
Promo berlaku sampai tgl 3 & 4 September S&K berlaku

LUNIX QL 2028i

RP. 35.500.000 dari harga Rp. 53.132.000

FREE! KOMPRESSOR IZUMI

BELANJA SEKARANG!
@CITYDENT.ID

Promo Pameran
Whitening Machine N-66 (supercam)

RP. 5JT dari harga Rp. 7.116.000

FREE! THERMOMETER GUN INFRARED, BEYOND SOLO WHITENING TREATMENT KIT, 2 BOX MASKER

BELANJA SEKARANG!
@CITYDENT.ID

20 22 **PROMO PAMERAN** CITYDENT
Promo berlaku sampai tgl 3 & 4 September S&K berlaku

ROSON N2

RP. 44.500.000 dari harga Rp. 64.968.000

FREE! KOMPRESSOR IZUMI

BELANJA SEKARANG!
@CITYDENT.ID

SALE SALE SALE
CITYDENT

PROMO PAMERAN CITYDENT
Promo berlaku sampai tgl 3 & 4 September S&K berlaku

ROSON N2

RP. 43.500.000 dari harga Rp. 61.336.000

FREE! KOMPRESSOR IZUMI

BELANJA SEKARANG!
@CITYDENT.ID

20 22 **PROMO PAMERAN** CITYDENT
Promo berlaku sampai tgl 3 & 4 September S&K berlaku

PAKET PEMAKAIAN 1 TAHUN

BELANJA SEKARANG!

4 PCS Washable Primary Effective Filter Period Frequency 15-30 days
2 PCS Water Vapour Absorbing Filter Period Frequency 2-3 month
1 PCS Active Carbon Filter Period Frequency 6-8 month
1 PCS H13 HEPA Filter Period Frequency 9-12 month
1 PCS UV Lamp
1 PCS Flexible Extension Arm

RP. 3.500.000 dari harga Rp. 5.410.000

BELANJA SEKARANG!
@CITYDENT.ID

PROMO PAMERAN CITYDENT
Promo berlaku sampai tgl 3 & 4 September S&K berlaku

ROSON N1

RP. 38.500.000 dari harga Rp. 56.642.000

FREE! KOMPRESSOR IZUMI

BELANJA SEKARANG!
@CITYDENT.ID

PROMO PAMERAN CITYDENT
Promo berlaku sampai tgl 3 & 4 September S&K berlaku

LUNIX QL 2028i

RP. 34.500.000 dari harga Rp. 49.508.000

FREE! KOMPRESSOR IZUMI

BELANJA SEKARANG!
@CITYDENT.ID

20 22 **PROMO PAMERAN** CITYDENT
Promo berlaku sampai tgl 3 & 4 September S&K berlaku

FLEXIBLE EXTENSION ARM

BELANJA SEKARANG!

RP. 600.000 dari harga Rp. 1.250.000

BELANJA SEKARANG!
@CITYDENT.ID



Awarded for Design.
Designed for the Dentist



OPTIK
Mikroskope in Medizin & Technik



MEDIT
i700

THE KEY TO UNLEASH YOUR CLINIC'S FULL POTENTIAL



DENTISTRY'S NEW NORM

AquaCare

QUALITY COMPETENCE INNOVATION



DOF
CRAFT 5X



All-in-One | Dental Milling Machine



5th
DENTISPHERE

DENTAL UNIT, AUTOCLAVE

DENTAL UNIT, AUTOCCLAVE
30%+5%+2,5%

SALE

2-3 SEP 2022



ALL ITEM

30%+10%

SALE

BIO MTA

Luxatemp



M3 RT FILES 300K



280K

M3 IMMATURE



280K

M3 L PLATINUM



300K

PAPER POINTS



M3 MAX CLEAN FILE



350K

M3 K FILES



60K

50K



M3 C + FILE



mocom
sterilizer



Ray
digital imaging plate system



intra oral imaging system



vatech



castellini
dental chair unit



Ray
panoramic



RAYA DENTAL

+62 8123532719

+62 8165429130

+62 81232699860



@rayadental



DentaLife
AUSTRALIA



ICE-C
CERAMIC BRACKET



EUROCLIP SLB
DAMON SELF-LIGATING



ORTHOEURO
orthodontic products

NEOLIX



ONEMEDDENTAL

onemedstore.id



Dental Unit



Dental BIB



Gloves

Saliva Ejector



Endo Needle



Dental Cotton



3M™ Single Bond Universal Adhesive performs across a range of variables, giving you true versatility.

Direct Placement Indications:

- Bonding light cured composite or compomer for all classes of direct restorations
- Root surface desensitization
- Sealing of dentin prior to amalgam restorations
- Protective varnish for glass ionomer restorative materials
- Repair of composite or compomer restorations
- Bonding sealants

Indirect Placement Indications:

- Bonding veneers with 3M™ RelyX™ Veneer Cement
- Adhesive/primer for chemical adhesion when bonding zirconia, alumina, metal or glass ceramic restorations
- Intraoral repair of existing indirect restorations
- Bonding self- or dual-cure core build-up materials and resin cements (with 3M™ Single Bond Universal DCA Dual Cure Activator)
- Sealing of dentin prior to temporization for indirect restoration placement

Refer to Instructions for Use for full list of indications.

- One-step, one-coat adhesive application
- Combined total-etch, self-etch and selective-etch adhesive
- Consistent bond strength to both moist and dry etched dentin
- Virtually no post-op sensitivity
- High bond strength to all indirect surfaces (zirconia, alumina, glass ceramics and metals) without a separate primer
- Excellent marginal integrity for highly esthetic restorations
- Self- and dual-cure compatible (with 3M™ Single Bond Universal DCA Dual Cure Activator)
- No refrigeration needed; store at room temperature for two years
- Bonds indirect restorations with 3M™ RelyX™ Ultimate Adhesive Resin Cement— without the need to light cure the adhesive
- Flip-top vial and unit dose delivery



Filtek™ Z350 XT Universal Restorative

Nanotechnology. For a beautiful polish.

You can spend a lot of time polishing most composites, **only to find the initial gloss doesn't last long. Or, you can** create smiles your patients will love by using our Esthetic Restoration Solution.

Thanks to 3M's unique, patented nanotechnology, Filtek™ Z350 XT Universal Restorative is easy to **polish and also offers unsurpassed polish retention.**



3moralcareid



@3moralcareindonesia

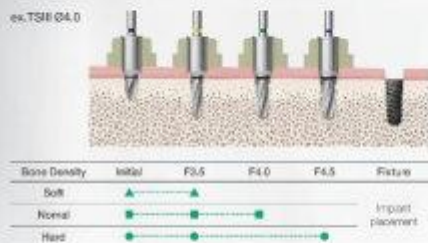
OneGuide

- Shortening drilling steps dramatically by adopting 122 concepts
- Possible to implant teeth No. 7 in spite of intermaxillary space limit through Side open
- Possible to do precise surgery with unshaken drilling
- Possible for fast surgery without worrying about Heating

Innovation 1. Shortening Drilling Steps Dramatically by Adopting 122 Concepts

- Possible to implant from 2 ~ 4 steps only according to bone quality

ex. TSM 04.0



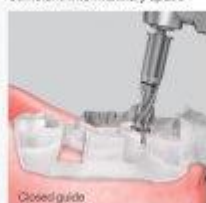
Innovation 2. Possible to Implant Teeth No. 7 in Spite of Intermaxillary Space Limit Through Side Open

- As the drill is inserted through side window according to patients oral status, possible to solve intermaxillary space limit perfectly
- Required intermaxillary space: OneGuide-36mm, Conventional guide-51mm
- Available to choose open or closed if required

Insufficient intermaxillary space



Sufficient intermaxillary space

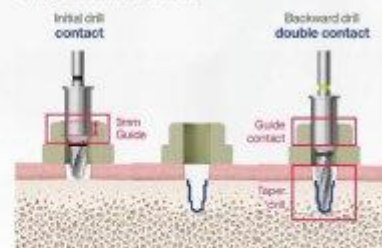


Open guide

Closed guide

Innovation 3. Possible to do Precise Surgery with Unshaken Drilling

- Initial drilling: Precise drilling available as the drill can be contacted with guide area within 3mm.
- Backward drilling: Precise drilling available as the drill is contacted with guide area always due to taper drill effect.



Innovation 4. Possible for Fast Surgery Without Worrying About Heating

- Enabling fast drilling without heating through side open which facilitates douche from OneGuide and outstanding cutting force of drills (Recommended rpm: 800~1200rpm)

Outstanding cutting force drill



Side open facilitating water supply



Seat color types



2013 Korea Good Design (GD) Award
Grand Prize

K3 Unit Chair

Amazingly Attractive!

Globally more than 20,000 units
installed since the release in 2013





cipta d.lab

High-tech Dental Lab in Indonesia



SCAN ME

Download our catalog

Order & Pick-Up Contact

SURABAYA

(031) 5678 324
081 5544 91917 (WA)
surabaya@ciptadlab.com

JAKARTA

(021) 5439 0632
0882 1189 7388 (WA)
jakarta@ciptadlab.com

E-mails

Case & Image
case@ciptadlab.com

Customer Service
cs@ciptadlab.com

Member Inquiry
member@ciptadlab.com

Social

www.ciptadlab.com
[@ciptadentallab](https://www.instagram.com/ciptadentallab)
[ciptadlab.id](https://www.facebook.com/ciptadlab.id)
info@ciptadlab.com

Visit our Booth to get Special Promotion



MEDITECH
INDUSTRY INDONESIA



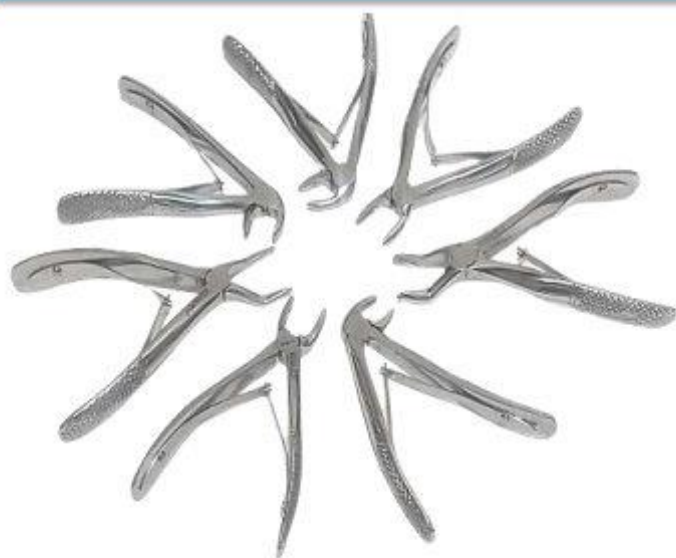
We Are Available

★ **Dental Instruments**

★ **Surgical Instruments**

★ **Orthodontic Instruments**

★ **Implant Instruments**



meditechindustryindonesia



Meditech Industry Indonesia



0821-4717-8464



info@meditechindonesia.com

PRAMITA Lab

3D CBCT

CONE BEAM COMPUTED TOMOGRAPHY

CANGGIH PRESISI TAJAM

Foto yang detail dengan dosis radiasi yang rendah

Foto Berkualitas Tinggi, Imaging 3D yang akurat

Contoh Aplikasi
CBCT

CBCT
Bisa dilayani di

PRAMITA LAB Surabaya
Jl. Jemur Andayani 67
Telp: (031) 647 7700

DIAGNOSIS Karies Gigi

IMPLEMENTASI PERIODONTAL

ENDODONTICS

TRAUMA DENTAL

IMPLANT GIGI

PRAMITA DENTAL LAB



Surgical Guide

Guide yang memungkinkan dokter gigi untuk menempatkan implant di area yang sangat spesifik dan sesuai dengan design planning untuk memberikan kedalaman, angulasi, dan ukuran implant yang paling ideal.

Pembuatan Restorasi Gigi Tiruan Cekat Berbahan Zirconia



Zirconia Multicolor



Porcelain Fused to Zirconia



Zirconia Monolitik

Pramita Clear Aligner

Aligner adalah salah satu metode perawatan gigi yang lebih mudah dan memiliki beberapa keunggulan, dibuat dengan teknologi modern untuk memastikan kualitas perawatan pasien dengan baik.

Keunggulan Menggunakan Pramita Clear Aligner

- Transparan dan hampir tidak terlihat sehingga tampil lebih percaya diri
 - Didesain oleh orthodontist berpengalaman dengan teknologi terkini
 - Jauh lebih nyaman karena dapat di lepas pasang saat makan atau menggosok gigi
 - Waktu perawatan lebih singkat
- Harga yang terjangkau

Pramita Clear Aligner



Dental Lab

Bisa dilayani di

PRAMITA LAB Surabaya
Jl. Ngagel Jaya No. 71
Telp: (031) 505 1900



Sentralindo Jaya Medika



Reliable Instrument Provider

A s i a D e n t



0 8 9 5 . 1 4 5 8 . 2 8 5 4

Jl. Walikota Mustajab No. 59C, Surabaya

GIVE YOUR PATIENTS THE SMILE

THEY'VE BEEN DREAMING OF!

OUR ZIRCONIA LAB :

MDI HO Jakarta

Ruko Emerald Boulevard,
Blok EB AA2 No.58
Jl. Jombang Raya, Tangsel
☎ 087884286866

MDI Surabaya

Jl Ronggolawe No 14
Surabaya
☎ 087786479191



MAHAKARYA
DENTAL
INDONESIA

"Digital Dental Laboratory"



Our Product:

- Manekin Kepala
- Manekin Torso
- Model Gigi Normal
- Model Gigi Pedodontia
- Model Gigi Anesthesia
- Model Bedah Mulut
- Model Gigi Implant
- dll.



Simulator Dental Indonesia

"Langkah awal seorang profesional"

PT MAHAKARYA DENTAL INDONESIA

RUKO EMERALD BOULEVARD, BLOK AA-2/58
JL. JOMBANG RAYA, RT 001 RW 007
KELURAHAN PARIGI, KECAMATAN PONDOK AREN
TANGERANG SELATAN 15427 BANTEN

Contact us:



Created by:

House of Production

Faculty of Dentistry Universitas Hang Tuah

